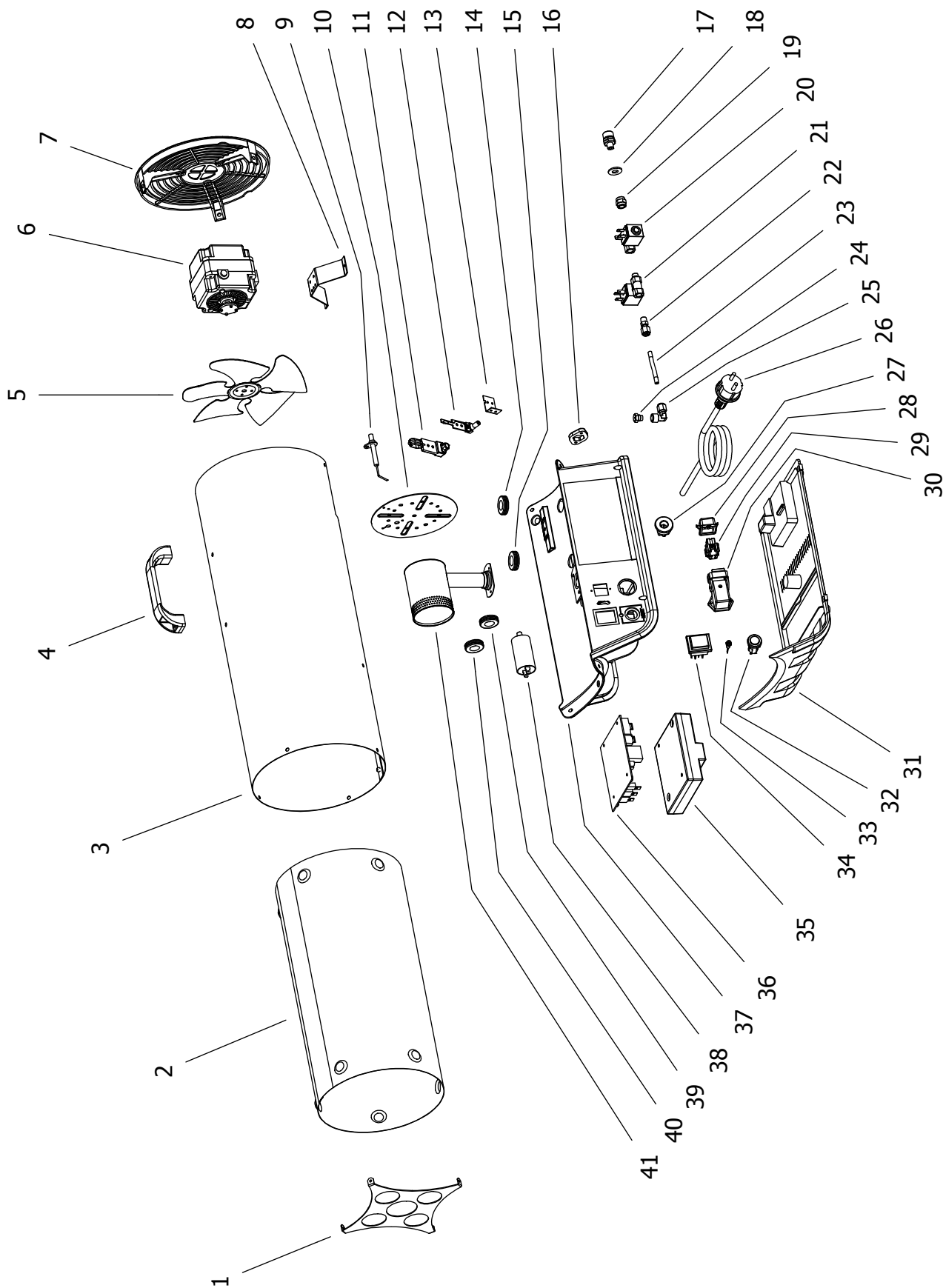


BLP 33 E MODEL 2011

UNIT 1

ILLUSTRATED PARTS BREAKDOWN

Edizione 2011
Rev. A



Pos.	Code NR	Description
1	4160.764	OUTLET GRID
2	4161.373	COMBUSTION CHAMBER
3	S/R	COVER
4	4162.893	PLASTIC HANDLE
5	4161.175	FAN BLADE
6	4160.045	MOTOR
7	4161.863	PLASTIC INLET GRID
8	4161.177	ELECTRIC MOTOR BRACKET
9	4160.237	IGNITOR ELECTRICAL FOLDER
10	4160.726	BURNER PLATE
11	4160.281	COVER AIR PROBE
12	4160.080	AIR PROBE
13	4162.794	AIR PROBE BRACKET
14	4160.646	GROMMET
15	4160.646	GROMMET
16	4161.854	BLOCK FOR NOZZLE
17	4160.048	GAS INLET NOZZLE
18	4160.283	WASHER
19	4161.094	SLEEVE
20	4160.562	ELECTROVALVE
21	4160.562	ELECTROVALVE
22	4160.623	NIPPLES REDUCER
23	4162.886	COPPER TUBE
24	4162.887	GAS NOZZLE
25	4160.621	ELBOW
26	4160.539	POWER CORD
27	4160.635	KEEPER WIRE
28	4162.467	CAP FOR THERMOSTAT SOCKET
29	4161.400	CONNECTION SOCKET
30	4160.647	ANGULAR FIX CASE
31	4162.883	LOWER PLASTIC BASE
32	4160.430	RESET SWITCH
33	4162.790	LED
34	4160.637	SWITCH
35	4160.346	PC BOARD COVER
36	4162.718	ELECTRONIC PC BOARD
37	4162.904	UPPER PLASTIC BASE
38	4161.830	CAPACITOR 21F
39	4160.646	GROMMET
40	4160.646	GROMMET
41	4162.889	GAS BURNER

S/R = Parts available on special request only