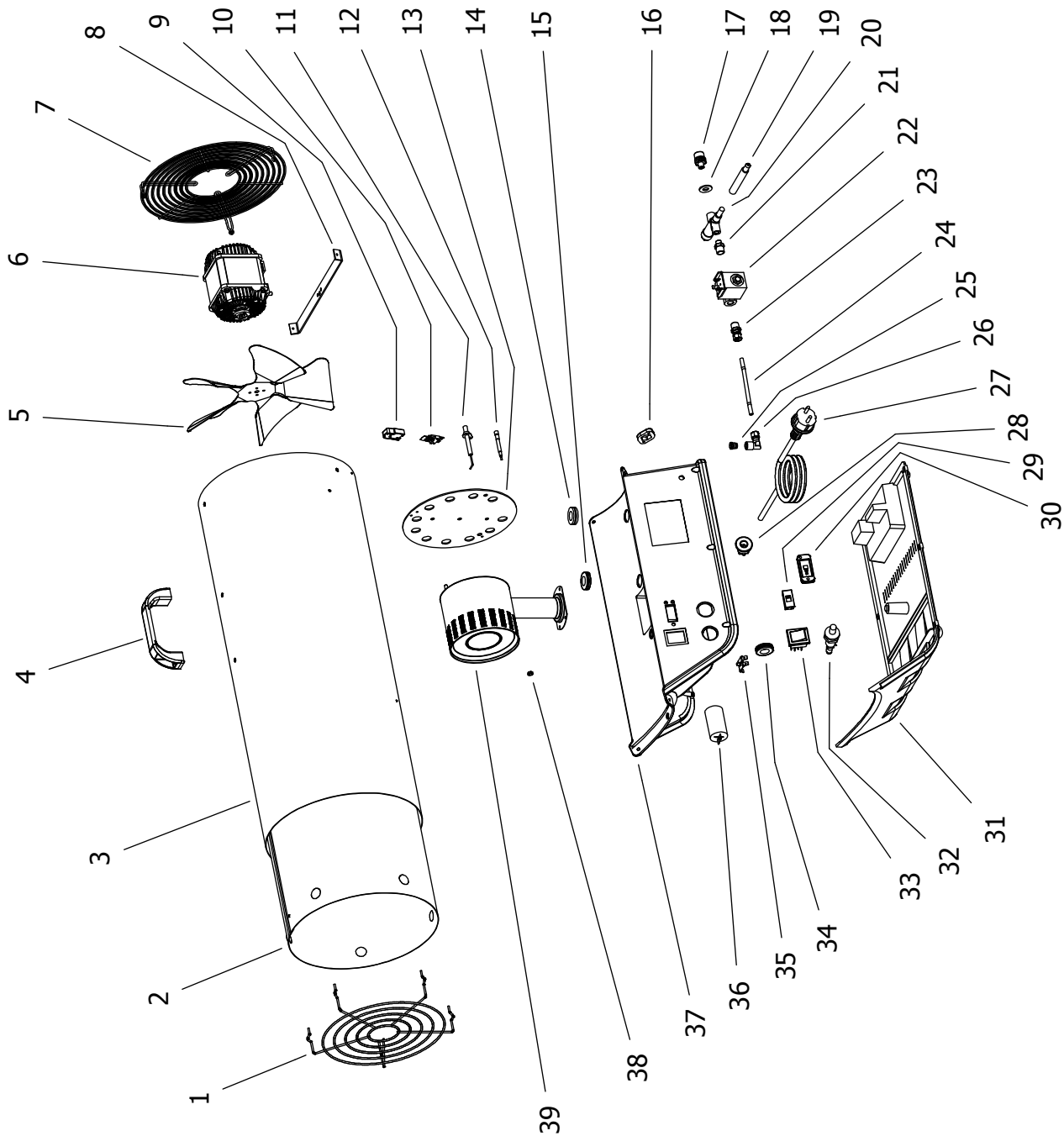


BLP 73 M DV (DUAL VOLTAGE) MODEL 2012

UNIT 1

ILLUSTRATED PARTS BREAKDOWN

Edizione 2012
Rev. A



Pos.	Code NR	Description
1	4160.740	OUTLET GRID
2	4162.749	COMBUSTION CHAMBER
3	4162.746	COVER
4	4162.893	PLASTIC HANDLE
5	4162.745	FAN
6	4161.167	MOTOR
7	4160.739	INLET GRID
8	4162.733	MOTOR BRACKET
9	4162.909	SAFETY THERMOSTAT COVER
10	4162.910	SAFETY THERMOSTAT
11	4160.731	IGNITION ELECTRICAL FOLDER
12	4106.042	INTERRUPTED THERMOCOUPLE
13	4162.870	BURNER PLATE
14	4160.646	GROMMET
15	4160.646	GROMMET
16	4161.854	BLOCK FOR NOZZLE
17	4160.048	GAS INLET NOZZLE
18	4160.283	WASHER
19	4162.479	VALVE ROD
20	4160.688	SAFETY VALVE
21	4160.299	REDUCTION NIPPLES
22	4161.268	ELECTROVALVE
23	4160.962	REDUCTION NIPPLES
24	4162.724	COPPER TUBE
25	4160.529	GAS NOZZLE
26	4160.967	ELBOW
27	4160.540	POWER CORD
28	4160.635	KEEPER WIRE
29	4160.117	SWITCH DUAL VOLTAGE
30	4160.284	SWITCH COVER
31	4162.853	LOWER PLASTIC BASE
32	4162.222	PIEZO IGNITOR
33	4160.637	SWITCH
34	4160.646	GROMMET
35	4160.639	RIVET POP
36	4032.816	CAPACITOR 6,3 μ F
37	4160.114	UPPER PLASTIC BASE
38	4106.043	THERMOCOUPLE NUT
39	4160.467	GAS BURNER